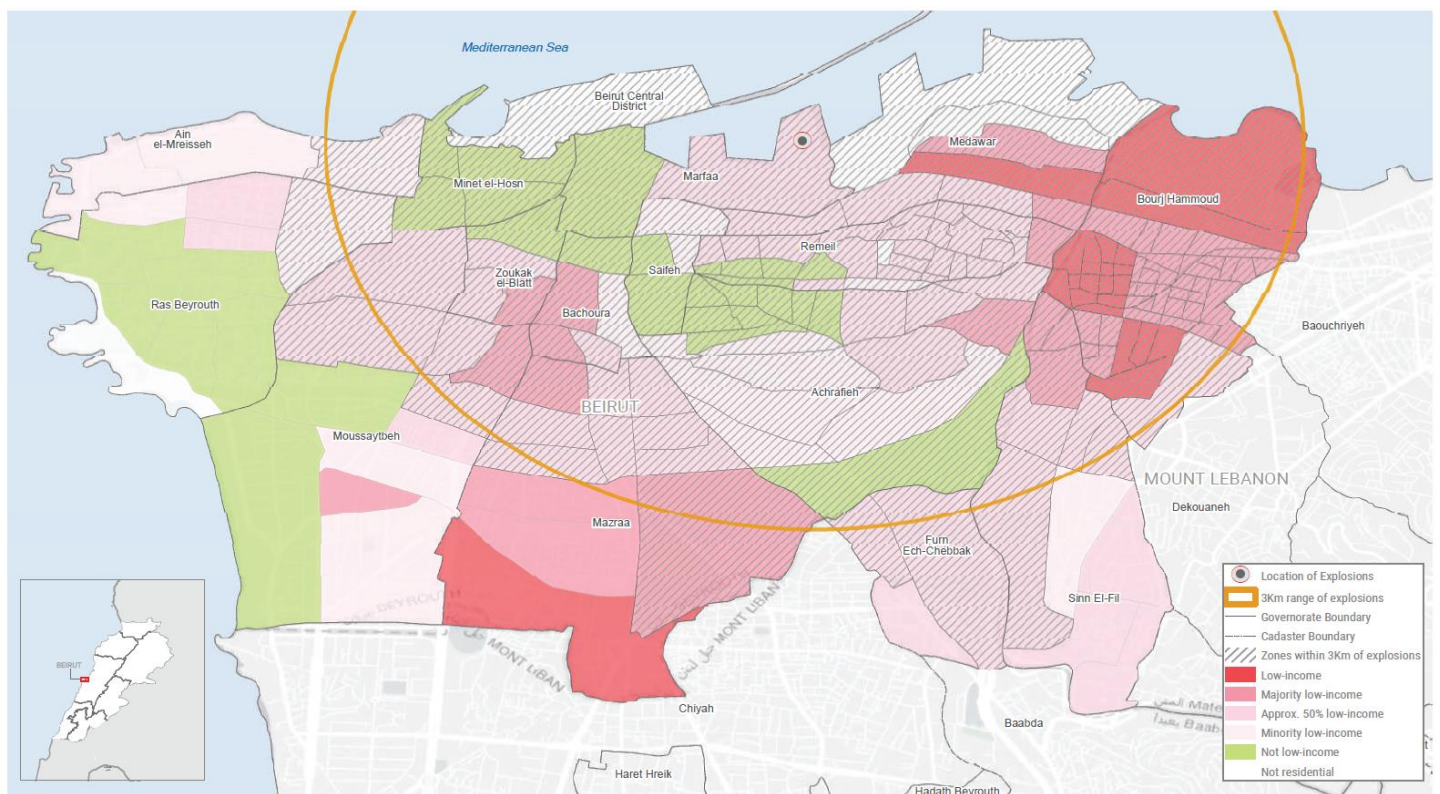


Situation Reports are produced by OCHA Lebanon in collaboration with humanitarian partners.

HIGHLIGHTS

- Some 36,000 people benefitted from protection services, out of approximately 152,000 people in need.
- Approximately seventy per cent of the identified needs for in-kind food assistance were covered with the distribution of an estimated 209,000 hot/ready-to-eat meals. Also, nearly 83,000 people received in-kind food parcels and 2,200 people received food vouchers. In addition, since the second half of August, close to 27,800 people received multi-purpose cash assistance, and over 200 micro, small and medium-sized enterprises were supported with either rehabilitation or financial assistance.
- Over 188 households were supported with cash-for-rent, out of a total of 14,500 households. Minor repairs and rehabilitation are also ongoing, with 1,015 and 243 apartments covered, respectively. Work is ongoing to meet outstanding needs, and Shelter partners are planning minor repairs and rehabilitation for 22,000 and 6,500 apartments, respectively.
- Water supply connection was re-established for nearly 20,000 people (about 4,000 households) in almost 1,000 buildings. This covers two-thirds of the known needs to date. Over 3,300 tanks and 230 pumps were installed, and some 6,400 hygiene kits and 840 baby kits were distributed.
- Provision of medical supplies and WASH services to medical facilities continued, including to Geitawi Hospital, where 80 water tanks were recently installed.
- 12 mobile storage units remained set up at the Beirut Port for enhanced storage capacity.

SOCIO-ECONOMIC VULNERABILITY PER ZONE



Map updated as of 9 October 2020

SITUATION OVERVIEW

Protection concerns remain significant. Community outreach activities therefore continue to be an important component of the protection response. Partners remain present at community centers, where services are provided in an integrated manner.

Food assistance continues, alongside a large-scale distribution of Multi-Purpose Cash Assistance (MPCA) that also aims at covering food needs of 150,000 people.

The continued provision of mental health and psychosocial support services (MHPSS) remains a key component of the health response, especially for the elderly and the most vulnerable segments of the population. Accordingly, the health response remains focused on the provision of outreach health services, including home-based care and nursing services. Health partners also continue to provide psychological first aid (PFA) sessions and gender-based violence (GBV) and sexual and reproductive health (SRH) consultations. A number of partners continue supporting primary healthcare centers (PHCs) and providing emergency care, medical consultations, and Infant and Young Child Feeding (IYCF) counseling. Distribution of medical supplies, including PPE, is on-going.

With regards to shelter, 7,500 weatherproofing kits were distributed to over 23,000 people in August and September. In an effort to transition from the immediate to the medium-term response, shelter partners are currently moving forward with support with cash-for-rent, as well as minor repairs and rehabilitation. Approximately 95 per cent of the needs are yet to be covered in this regard and, with winter approaching, rehabilitation remains one of the main areas of ongoing work for the partners. Different building typologies and high-urban density significantly add to the complexity – and the pace – of the response, with each building having sustained a different kind of damage and therefore requiring a customized response. In addition, many heritage and low-income dwellings were already in poor conditions before the explosions and often housing the most vulnerable segments of the population. While shelter partners continue to scale up their technical capacity, the pace of the response is impacted by the ability to quickly engage contractors and respond to identified needs.

COVID-19 Update

The COVID-19 outbreak remains a serious concern as Lebanon grapples a rapidly escalating public health crisis. As of 15 October, Lebanon's total number of cases surpassed 58,000 – an increase in the number of cases of approximately 70 per cent over the past three weeks. There was a total of 501 deaths and 25,694 recoveries as of 15 October. At least 1,275 healthcare workers have been diagnosed with the respiratory illness since February.

Nearly 1,000 Palestine refugees, half of whom are living in camps, have been diagnosed with COVID-19 since 21 February; 24 have since died. In addition, 901 Syrian refugees and 15 refugees of other nationalities have contracted COVID-19 in the same period; 15 have died.

As more than eight positive COVID-19 cases were registered per 100,000 people over the preceding 14 days, 164 villages and towns across Lebanon are currently under lockdown, with a curfew in place everywhere between 01:00 to 06:00. This comes after an earlier 111 towns and villages were set under lockdown on 4 October, as a new localized approach to containing the virus was introduced by the Caretaker Government, alongside a zonal mapping system to determine the intensity of cases in each area.

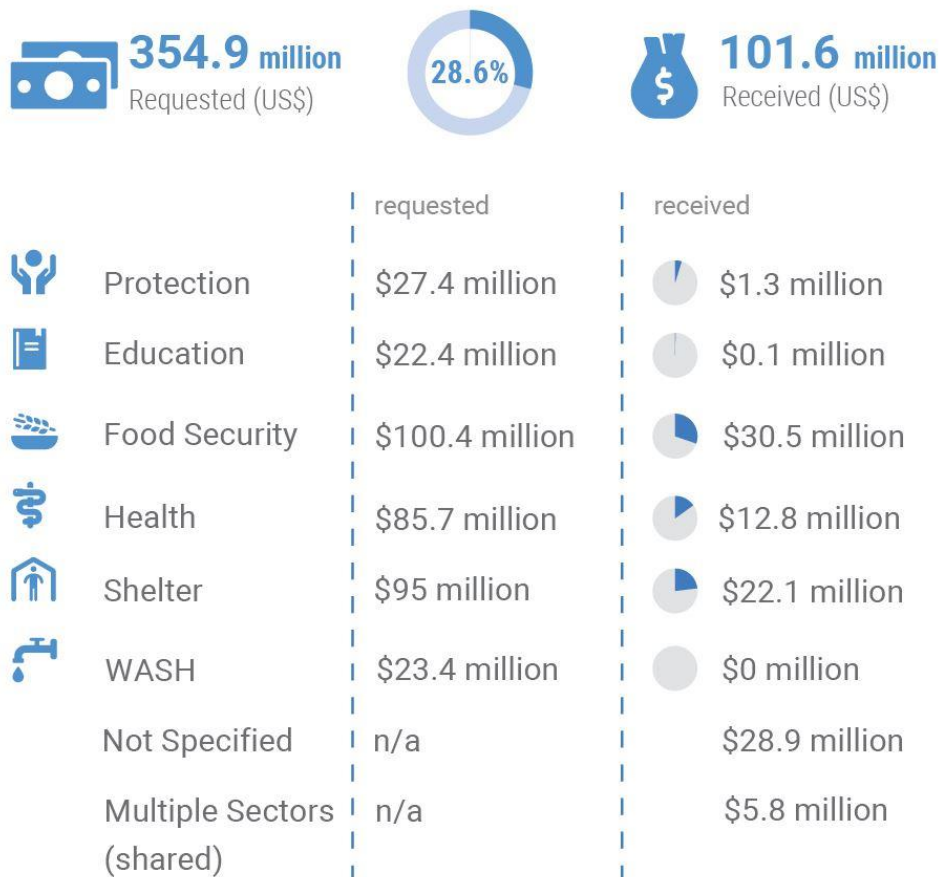


Across Lebanon, the occupancy rate of regular beds stands at 63 per cent, while that of intensive care unit (ICU)-beds is at 72 per cent; ICU beds in Akkar and Bekaa are fully occupied. Currently, thirteen public hospitals are supported by WHO with 181 nurses. The outbreaks at two of the largest detention centers in country, Roumieh and Zahle prisons, were brought under control, due in part to the deployment of several healthcare staff.

FUNDING

The UN-coordinated response to the Beirut Port explosions, through the Flash Appeal issued on 14 August, is seeking US\$354.9 million to address immediate lifesaving and time-critical early recovery needs for three months. Funding towards 119 projects, targeting 300,000 people in need, is being tracked on the [Financial Tracking Service \(FTS\)](#). The Appeal remains less than 29 per cent funded (\$101.6 million) as of 15 October. In addition, at least \$19M has been contributed outside of the Flash Appeal.

Received funding by Sector



The UN and partners remain focused on protecting and delivering assistance to those most in need. The loss of livelihoods, compounded by the current COVID-19 outbreak, as well as the financial and economic crises, have created an urgent need for continued assistance in terms of protection, food, health, shelter, and WASH. Over two months after the explosions, the afore-mentioned sectors remain significantly underfunded.

Sustained, timely, and predictable funding is required to continue targeted humanitarian interventions. Their scale-up, particularly for the most vulnerable as winter fast approaches is critical to prevent the situation from worsening.

Beyond humanitarian assistance, Lebanon will continue to require substantial and long-term assistance to support economic reform, recovery and reconstruction. On the programmatic side, the UN and partners are actively engaged in the development of the World Bank Group, European Union and UN Reform, Recovery and Reconstruction Framework (3RF) – a critical step in the transition from immediate humanitarian programmes to more sustainable interventions and support.

HUMANITARIAN RESPONSE

Protection

Response:

- Community outreach activities continue to be an important component of the protection response. Partners remain present at community centers to ensure continuation of outreach activities, where services are provided in an integrated manner.
- Local organizations remain key when it comes to community engagement. Over 1,000 girls, boys, women and men benefitted from psychosocial support services (PSS) in Quarantina thanks to the NGO Borderless. The NGO also plans to open a permanent community center in Ouzai. Similarly, Save the Children International supported 140 children at Child-Friendly Spaces in Bourj Hammoud, Geitawi, and Karm Zeitoun.
- Since the beginning of the response, GBV actors distributed 8,500 dignity kits to women and girls, organised outreach sessions, and provided PFA to those in need. Availability and accessibility of GBV services have increased with the establishment of new women and girls' safe spaces in Geitawi, Mar Mikhael and Quarantina. A GBV service mapping was developed and also includes information on specialized, GBV services for members of the LGBTQIA+ community.
- Raising awareness of concern around sexual exploitation and abuse continues, while the Lebanon PSEA (Protection from Sexual Exploitation and Abuse) Network is working to establish a common feedback and complaint mechanism.
- Since the beginning of the response, 36,109 people benefitted from protection services, out of approximately 152,000 people in need.



11,231

of people reached through protection, gender-based violence (GBV) outreach and risk mitigation activities



10,718

of people benefitting from information sessions, awareness sessions and individual consultations on how to access services (excl. legal services)



6,340

of people engaged in community-based child protection activities



3,966

of people provided with specialized Mental Health Psychosocial Support and Focused Non-specialised Psychosocial Support



2,732

of people reached through GBV services



416

of people with specific needs supported with protection or emergency cash



373

of people with specific needs, including disabilities, receiving individual counseling, case management and specialized support



333

of people benefitting from counseling, legal assistance and legal representation

N.B. The above figures are not necessarily representative of the entirety of the protection response on the ground.

Education

Response:

- Since the third week of August, War Child Holland has been providing recreational activities for 1,275 children in Basta (274 children) and Quarantina (1,001).
- UNESCO is providing PSS activities for 100 children and 68 parents in Gemmayzeh and Mar Mikhael. Activities include relaxation techniques, painting, and dancing.
- Since the beginning of the response, NGOs Right to Play and Plan International are running PSS play-based sessions in Medawar Quarantina, Nation Station Achrafieh, Karm el Zeitoun Achrafieh, Burj al Barajneh and Chiyah for 200 children.

- In Basta, Geitawi and Quarantina, NGO Ana Aqra is organising literacy support classes for 139 learners and their parents.
- 170 children are attending supplementary educational services at the Geitawi and Sanayeh centers supported by the Norwegian Refugee Council.
- NGO HOOPS continues to support Sport-4-Development activities for adolescents and youths. Since the beginning of the response, 342 adolescents and youths were trained by 51 coaches.

Food Security

Response:

- Over the last two weeks of September, 2,154 beneficiaries received a full ration of in-kind food parcels. Since the beginning of the response, 82,841 people received in-kind food parcels, covering 72 per cent of the known needs to date.
- In the second half of September, 1,637 people received food vouchers. An additional 1,000 households will receive food vouchers assistance over the coming weeks. Since the beginning of the response, 2,214 people received food vouchers.
- Since the second half of September, food security sector partners have been delivering MPCA to those most economically vulnerable among the population affected by the explosions. During the reporting period, 20,848 people received MPCA, with a total of 27,741 people reached since August. Those targeted by WFP will receive US\$250 over a six-month period, per household, per month; cash assistance will be continuing up to February 2021 so to cover the basic needs of 150,000 people. The Sector has also reached 75 people with cash-for-work.
- Community kitchens continued to be operational in Bourj Hammound and Achrafieh, reaching 5,947 people during the reporting period. An estimated 209,053 hot/ready-to-eat meals were distributed since the beginning of the response, covering 70 per cent of the known needs to date. A few partners are assessing whether transitioning towards a different modality, such as food baskets or cash-based transfers, could be feasible. Other partners are planning to continue supporting specific groups – such as the elderly and people living with disabilities – with hot meals.
- With regards to nutrition activities, 3,145 pregnant and lactating women (PLW) received at least one counseling session by a lactation specialist during the reporting period. Since the beginning of the response, 7,085 PLW in need were reached.
- Twelve micro, small and medium-sized enterprises (MSMEs) received direct support with either rehabilitation or financial assistance during the reporting period. Since the beginning of the response, 207 MSMEs were supported. An additional 124 establishments will be reached over the next weeks.



209,053

of hot/ready-to-eat meals distributed



82,841

of beneficiaries receiving in-kind food parcels (full portion)



27,471

of beneficiaries receiving multi-purpose cash assistance



7,085

of mothers/caregivers receiving at least one counselling session by a lactation specialist



2,214

of beneficiaries receiving food vouchers



207

of micro, small and medium-sized enterprises (MSMEs) supported with rehabilitation or financial assistance



75

of beneficiaries supported with cash-for-work



12,500 metric tons of wheat flour distributed, covering approximately 80 per cent of affected stocks

Health

Needs:

- Following the Port explosions, the most vulnerable segments of the population continue needing support, specifically with regards to mental health, psychosocial support and physical therapy.
- Similarly, coverage of hospitalization fees and prosthesis remain a critical need, as many patients are unable to secure admission to hospitals without financial means or guarantees that fees will be covered by a sponsor.

Response:

Outreach health services, including mobile medical units (MMUs), medical stations and home-based care

- Through their tents, MMUs and outreach teams, Amel Association, HelpAge International, Imam Sadr Foundation (ISF), International Medical Corps, Makassed, SIDC and UNFPA conducted 368 PFA sessions, 25 GBV consultations, including counseling and/or medication support, for 53 families. Since the third week of September, 103 elderly were reached with home-based medical consultations and nursing services. Since the beginning of the response 2,158 PFA sessions and 287 GBV consultations were provided; 223 elderly were reached through home-based medical consultations and nursing services; 11,330 women and girls received SRH consultations.

Primary Healthcare Centers (PHCs)

- Caritas, International Orthodox Christian Charities (IOCC) and Makhzoumi Foundation continue to provide injury care, medical consultations, mental health services, IYCF counseling and SRH services to affected communities. Since the third week of September, Caritas provided 88 medical consultations, 11 psychotherapy sessions, and medications for 127 patients, and IOCC supported nine centers with 10 midwives. Since the beginning of the response, Restart Center reached 594 people and referred 516 people to other support services as necessary.

Mental Health and Psychosocial Support Services (MHPSS)

- International Association for Human Values, ISF, Jesuite Refugee Service (JSR), Médecins du Monde (MdM), Relief International, Restart Center, and UNFPA continue providing MHPSS to affected communities. Since the third week of September, over 970 persons received MHPSS, including mental health, PFA, and PSS sessions. ISF, JRS and MdM alone have provided over 1,000 MHPSS in-person support sessions since the beginning of the response.

Donations and distribution of medical supplies

- Ten hospitals, six PHCs, two dispensaries and two NGOs received facemasks, hand sanitizers, PPE, medications and medical supplies, including surgical-related supplies, as well as 1,581 dignity and 80 hygiene kits. Partners that supported these donations were: Anera, Première Urgence-Aide Medicale Internationale, Restart Center, Syrian-American Medical Society, UNFPA and UNICEF. Since the beginning of the response, IMC supported 19 PHCs, eight hospitals and two MMUs with medical equipment, PPE and medications. Also, 1,786 hygiene kits were distributed and face masks and hand sanitizer were given to 2,000 civil-society volunteers.

Shelter

Response:

- Based on reported information from partners, as of 9 October:
 - 15 households received cash-for-rent support in Achrafieh and Rmeil. Since the beginning of the response, 188 households were supported with cash-for-rent. A total of 14,500 households are being targeted by the sector.
 - 484 affected households benefitted from minor repairs (level 1); the majority of those reached live in Achrafieh, Bachoura, Bourj Hammoud, Rmeil and Zoukak el-Blatt. Since the beginning of the response, out of 22,000 apartments targeted, minor repairs to 1,015 apartments were conducted.
 - 31 affected households benefitted from rehabilitation of their apartments (level 2); the majority of those reached live in Achrafieh, Medawar and Rmeil. Since the beginning of the response, out of 6,500 apartments targeted, rehabilitations to 243 apartments were conducted.

Gaps & Constraints:

- Different building typologies and high-urban density significantly add to the complexity – and the pace – of the response as each building has sustained a different kind of damage and requires a customized response. In addition, many heritage and low-income dwellings were already in poor conditions before the explosions and often housing the most vulnerable segments of the population.
- While shelter partners continue to scale up their technical capacity, the pace of the response is impacted by the ability to quickly engage contractors and respond to identified needs. In this vein, construction material requirements need to be carefully considered, with concerns on quality, bulk imports and inflation.

Water, Sanitation and Hygiene (WASH)

Needs:

- As of 8 October, 7,880 buildings were assessed since the beginning of the response, showing over 1,800 buildings needing at least one type of WASH intervention and/or support, and nearly 400 buildings having connection issues to the main urban network. In addition, 5,980 water tanks and 538 pumps were found to be damaged.
- The identification of leakages and quick repair continues, as well as a 90-kilometer repair of the water pipeline. Repair work is estimated to continue until the end of October.
- The Sector is also working on addressing the following needs: re-construction of the Achrafieh water reservoir, set-up of two new chlorination systems, rehabilitation of a water treatment facility in Dbayeh, and rehabilitation of wells in Damour.
- Cleaning and unplugging the wastewater network damaged as a result of the explosions.

Response:

- Since the beginning of the response, water supply connection was re-established for 19,922 people (3,946 households), living in 957 buildings. Currently, two-thirds of the known needs are estimated to have been covered.
- Since the third week of September, 673 water tanks and 121 pumps were installed. A total of 3,372 tanks and 235 pumps were installed since the beginning of the response. Also, out of 80 leakages to the water pipeline identified, 25 were repaired.
- A total of 1,000 hygiene kits were distributed during the reporting period. Since the beginning of the response, Sector partners distributed 6,455 hygiene kits and 843 baby kits.
- Over 2,300 posters were distributed across the worst affected areas, and 25,000 SMS were sent, referring people to the WASH hotline that supports requests for water trucking, minor plumbing repairs and/or other WASH hardware support. So far, 305 requests were handled and addressed through the hotline.
- Provision of WASH services to medical facilities also continues, including to Geitawi Hospital, where 80 water tanks were recently installed by LebRelief and World Vision International.

Gaps & Constraints:

- \$4.7 million in funding thus far received has allowed the Sector to restore water service at the building level in the most affected areas.
- Approximately an additional \$20 million is however needed to close the gap in covering the remaining needs in terms of WASH items and services provision, repair of the water pipeline, network and facilities, as well as repair of the wastewater network.

Logistics

Response:

- 12 mobile storage units remain set up at the Beirut Port to temporarily increase storage capacity.

For further information, please contact:

Séverine Rey, Head of Office, UN OCHA Lebanon, rey@un.org, Tel: +961 71 802 640

Enrica Giacobbe, Humanitarian Affairs Officer, UN OCHA Lebanon, giacobbe@un.org, Tel: +961 71 907 855

For more information, please visit www.unocha.org www.reliefweb.int